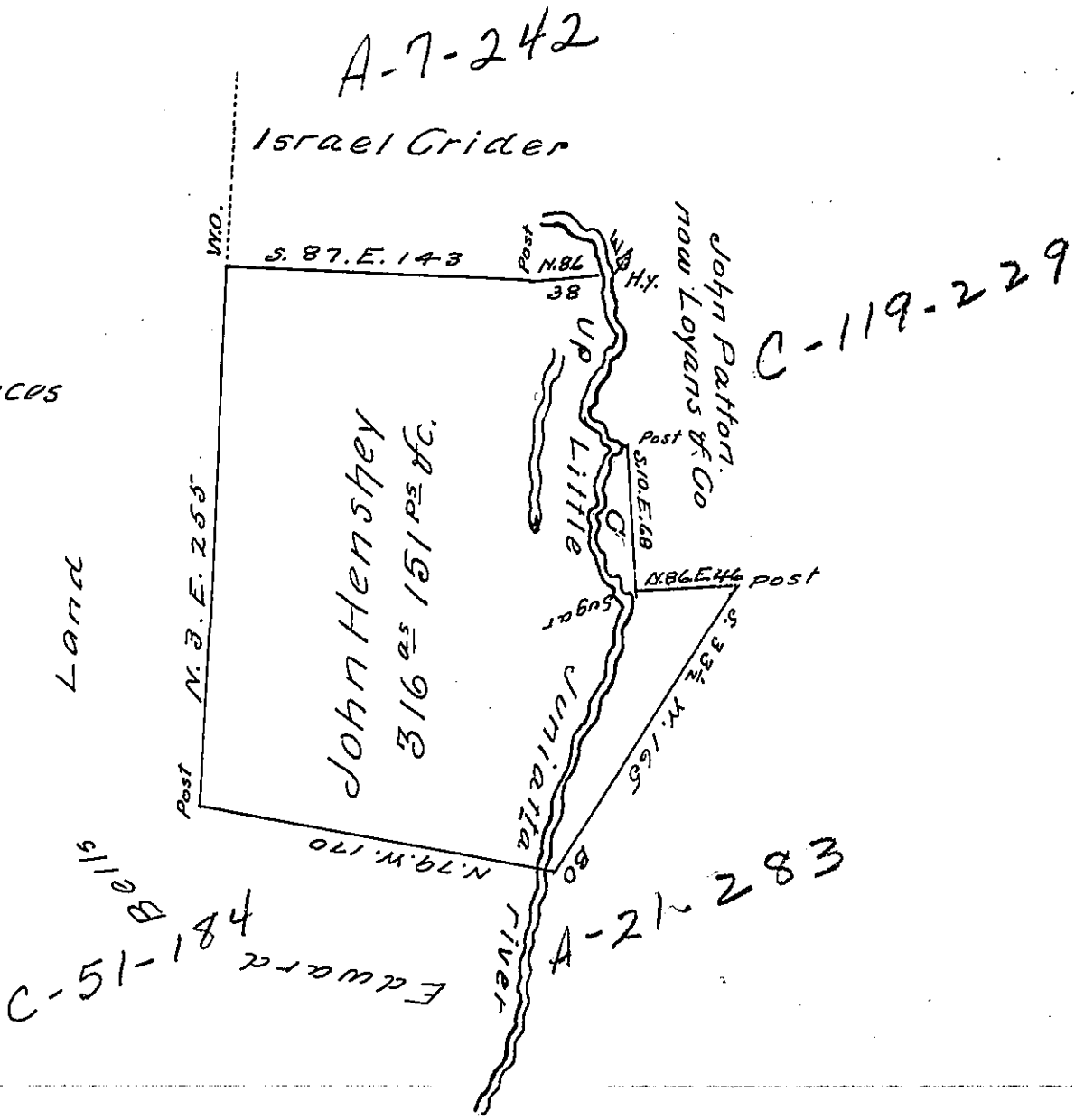


The Courses & distances  
up the river from  
Hickry to Sugar

S 26 E	12
S 4 W	23
S 28 W	34
S 47 E	26
S 16 W	20
S 20 E	51



Situate in Antis Township in the County of Huntingdon Containing  
three hundred & sixteen acres one hundred & fifty one perches and  
the usual allowance of six per Cent for roads &c. surveyed the  
23<sup>d</sup> day of August 1836 In pursuance of a Warrant Granted to  
John Henshey the 11<sup>th</sup> day of June A.D. 1836.

The piece marked G- contains one acre one hundred &  
thirty seven perches &c. and is Claimed by Loyans & Company  
on a Location of 1766 or 1767 in the name of Hugh Tomb but was  
not returned until 1802

Francis Cassidy D.S.

John Taylor Esquire S.G

IN TESTIMONY that the above is a copy of the original remaining on file in  
the Department of Internal Affairs of Pennsylvania, made  
conformably to an Act of Assembly approved the 16th day of  
February, 1833, I have hereunto set my Hand and caused  
the Seal of said Department to be affixed at Harrisburg,  
this twenty second day of March 1905

*Isaac D. Brown*  
Secretary of Internal Affairs.